
SOS 2009 User Manual

Installation & Setup Basics

Alpha Omega Publications

MMVI Alpha Omega Publications, Inc.

Switched-On Schoolhouse® 2009, Switched-On Schoolhouse®, Switched-On®, and their logos are registered trademarks of Alpha Omega Publications, Inc.® All Rights Reserved. No part of this publication may be reproduced, stored in an electronic retrieval system, or transmitted in any form by any means – electronic, mechanical, photocopy, recording, or otherwise – without the prior written permission of Alpha Omega Publications, Inc.® Brief quotations may be used in literary review.

Table of Contents

Welcome	4
NEW Switched-On Schoolhouse 2009 Features	5
Recommended System Requirements	6
Installing Switched-On Schoolhouse 2009	7
Types of Installs	7
Home Edition Full Install	8
Home Edition Client Install.....	12
Upgrading to 2009	15
2008 to 2009	15
2007 to 2009	16
Upgrading From Earlier Versions.....	17
Removing (Uninstalling) SOS 2009	17
Making the Most of Your SOS Setup	18
Logging In	19
Product Registration	19
Setup Wizard	21
Ready to Begin?	22
Creating a Calendar.....	22
Customizing a Calendar	23
Viewing a Calendar.....	24
Adding Students.....	24
Installing Subjects.....	25
Assigning Subjects.....	26
Sample Lesson	26
SOS Setup Completion / Homepage	27
Help Resources	28
Exiting SOS	28
Activities Away from the Computer	29
Tutorials	30
Overview Presentation.....	31
EULA.....	32
Resetting Your Teacher Password.....	37
Resource List.....	38



Switched-On Schoolhouse® 2009

Welcome

Welcome to Switched-On Schoolhouse® Home Edition 2009!

How to Use This Guide

This electronic reference guide was designed to help you quickly and easily find what you need as you help students succeed in Switched-On Schoolhouse®. As you move from topic to topic, you see graphics and buttons accompanied by quick explanations and handy tips. You can also walk through step-by-step instructions that show you how to accomplish different tasks.

There are two major sections in this online help guide:


SOS TEACHER—A tour through SOS Teacher

SOS ASSIGNMENTS—Learn about your student's assignments and how you can help them when they need assistance

Additional Help

SOS has a number of on-line tutorials that walk you through many of the functions that maximize SOS performance. A list of the available tutorials can be found on page 30 in this guide. You can access them using any of several methods:



- They were installed on your computer with SOS 2009. Simply double-click the icon  on your desktop to open the tutorials.
- They are also available at <http://www.sostutorials.com/>.
- Finally, you can access them on your computer by following these steps:
 1. Click **Start** on the task bar of your computer.
 2. Next, click **All Programs**.
 3. Select **AOP**.
 4. Select **Switched-On Schoolhouse 2009**.
 5. Select **Tutorials**.

AOP offers an overview of how to use the application. You can watch the SOS Overview by clicking the **Help** button on your **Home** screen and selecting **SOS Overview** from the sub-menu that appears.

If you need additional help, you can contact Alpha Omega Publications:

Visit www.aophomeschooling.com/support/ to view our extensive database of solutions to problems you might encounter with SOS or other AOP products. The database is updated regularly as new issues and solutions are identified. You can also locate software patches and revisions as well at this site.

Call toll-free 1-866-444-4498 for Technical Support.

Call toll-free 1-800-622-3070 for Customer Service.



2009 SOS Install and Setup Basics Guide

If you need to speak to a Technical Support team member, determine the following information before calling:

The version of Windows you are currently using:

Click **Start**, then **Run** (Vista users, type **Run** in the **Start Search** box and press **Enter**.)

Type in **SYSDM.CPL** and click **OK**.

A window appears with the version of Windows running on your computer and the amount of RAM available.

The available disc space on your computer:

Click **Start**.

Select **My Computer** (Vista users, select **Computer**).

Right-click the **(C:)** drive and select **Properties**.

The version of Switched-On Schoolhouse® you are using:

Click the **SOS logo** on your **Homepage**.

NEW Switched-On Schoolhouse 2009 Features

What's new for 2009? SOS offers you several new features to enhance your teaching and learning experience.

- **MiSOS *** New**
 - Home Page Themes *** New
 - Customizable Home Page *** New
- Daily Work Report *** New
- Simplified Process to Exclude a Range of Schooldays
- Zero-out Assignments with One Click *** New
- Lesson Plan Icons for Different Assignment Types *** New
- Preinstalled Sample Lessons
- Instructional Text on a number of Form Screens
- Modified Term and Calendar Forms
- Context Sensitive Help Feature *** New
- Redesigned Student Schoolwork Page
- Timeline *** New
- Copy Curriculum Feature in Student Application *** New



2009 SOS Install and Setup Basics Guide

Getting Started

Switched-On Schoolhouse® (SOS) is easy to install on your home computer. Before putting in the application disc, double-check to make sure your computer meets the recommended minimum system requirements. This ensures the program is able to run at its best.

Note: The requirements in the first row of the table on the following page are *minimal*. Depending on the configuration of your computer, you may find that you need to run SOS on a computer that exceeds these requirements, giving you more memory and a faster processing speed.

Vista Aero Users: We strongly recommend that you use a computer meeting the requirements for optimal performance.

Note: Only English language versions of Microsoft® XP and Vista are supported.

Recommended Minimum System Requirements

The recommended minimum system requirements for running SOS on your computer are:

Requirements	
XP Service Pack 2	Vista (all versions)
<p>Minimum Requirements</p> <ul style="list-style-type: none"> • Microsoft IE 7 or higher • 500 MHz or higher processor • 512 MB Memory (RAM) • 600 MB hard drive space • 1024 X 768 or higher resolution monitor, 16 bit color • CD-ROM drive • Adobe Reader • Printer recommended 	<p>Minimum Requirements</p> <ul style="list-style-type: none"> • Microsoft IE 7 or higher • 1 GHz or higher processor • 1 GB Memory (RAM) • 600 MB hard drive space • 1024 X 768 or higher resolution monitor, 16 bit color • CD-ROM drive • Adobe Reader • Printer recommended
<p>For optimal performance:</p> <ul style="list-style-type: none"> • Microsoft IE 7 or higher • 1 GHz or higher processor • 512 MB Memory (RAM) • 600 MB hard drive space • 1024 X 768 or higher resolution monitor, 16 bit color • CD-ROM drive • Adobe Reader • Printer recommended 	<p>For optimal performance:</p> <ul style="list-style-type: none"> • Microsoft IE 7 or higher • 1.5 GHz or higher processor • 2 GB Memory (RAM) • 600 MB hard drive space • 1024 X 768 or higher resolution monitor, 16 bit color • CD-ROM drive • Adobe Reader • Printer recommended

Note: The requirements in the first row of the table above are *minimal*. Depending on the configuration of your computer, you may find that you need to run SOS on a computer that exceeds these requirements, giving you more memory and a faster processing speed.

Vista Aero Users: We strongly recommend that you use a computer meeting the requirements for optimal performance.



2009 SOS Install and Setup Basics Guide

Installing Switched-On Schoolhouse®

SOS is easy to install because most of the components install themselves! But before you begin, there are a few things you should do to ensure that the program will run at its best:

1. Your computer operating system needs to be either Microsoft XP Service Pack 2 (or higher) or any version of Microsoft Windows Vista.
2. Check to make sure your computer meets the recommended minimum system requirements. Your computer *must* meet or exceed the minimum requirements to receive technical support. (See the requirements table on the previous page.

Note: A check is performed during SOS installation to verify that all requirements are met. If they are not, a list of checked items is displayed alerting you to the items that do not meet specification for effective operation of SOS.

Before You Install

If you are installing SOS for the *first* time on your computer, continue with the [Types of Installs](#) section immediately below.

If you already have a version of SOS installed on your computer, please go to [Upgrading to SOS 2009 Home Edition](#) beginning on page 18 of this guide BEFORE continuing.

Types of Installs

SOS Home Edition offers two different installs; a full install and a client install. If this is the first time you are installing SOS, you *must* do a full install on the main computer before you can do a client install.

- **Full Install** – SOS Teacher, SOS Student and the database all reside on the same computer.
- **Client Install** – SOS Student and SOS Teacher reside on a computer which is part of a home network linked to the main SOS computer, which contains the full install. For SOS to function properly, the client computer requires a constant connection to the main computer with the full install.

Note: If you currently have an earlier version of SOS installed on your computer, see the Upgrade section (starting on page 18) of this guide before proceeding.

Note to previous SOS users:

SOS 2009 installs the database server and database separately this year, so it may seem as if you are repeating the same steps. In a way you are, but first you will install the server and database, then the application.



2009 SOS Install and Setup Basics Guide

SOS Home Edition – Full Install

To perform a full install:

1. Insert the SOS 2009 installation disc into your CD-ROM or DVD drive. The **SOS 2009 Setup** window displays. Select **SOS 2009 Home Edition** (top button).

A **Configuration Check** window appears. This is to verify that your hardware and operating system meet the SOS minimum requirements. Anything with a checkmark next to it meets minimum standards. An **x** indicates an item NOT meeting minimum standards. Click **Next** to continue.

NOTE: You may continue with the installation process, even if not all items meet minimum standards. You may need to upgrade your hardware or operating system for SOS to work effectively.

WARNING:

If you have items listed in the **Windows System** section of this screen, you must fix them prior to continuing or your installation will very likely fail. If there is not a “Click to fix...” link beside an entry, the file must be decrypted. If you need assistance in doing this, please click the **Start** button in the lower left corner of your task bar, and then select **Help and Support**. This process differs depending on your operating system.

2. A new window opens with a list of the applications SOS must install. Programs with a checkmark are already installed on your computer. Any unchecked applications will be installed automatically when you click **Install**.
3. After you click **Install**, the **Confirm Installation** window pops up with a list of the programs to be installed. Click **OK**. The SOS Installer begins installing the needed programs.

The installation of applications not already on your computer begins when you click **OK**.

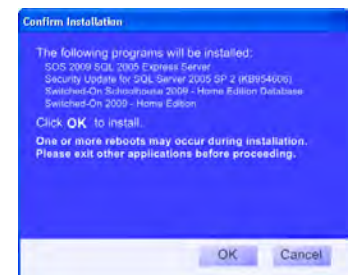
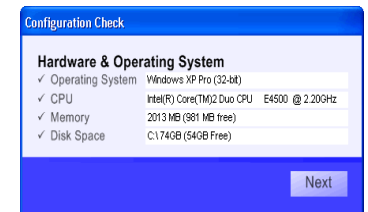
NOTE: This process may take some time depending on the applications that must be installed.

Below is a list of all applications needed to run SOS:

- Microsoft Internet Explorer 7 or higher
- Microsoft Windows® Installer 2.0
- Microsoft® .NET Framework 3.0
- Macromedia Flash™ Player 10
- SQL Express 2005
- Crystal Reports Basic Runtime for Visual Basic Studio 2008

Microsoft Internet Explorer (IE) is not included in the SOS install. It should have been installed when you purchased your computer. You can download IE free by going to www.microsoft.com. Please contact the seller if you have difficulty with this.

NOTE: It is very important that you use IE 7 or higher. If you are currently running IE 6 or below, please download IE 7 before continuing this installation process.





2009 SOS Install and Setup Basics Guide

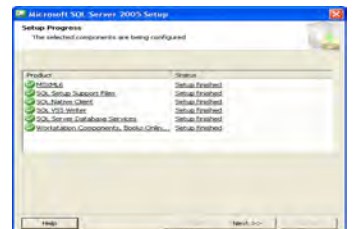
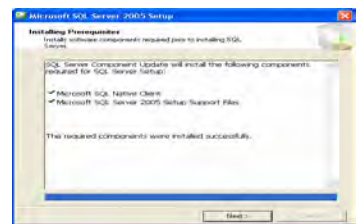
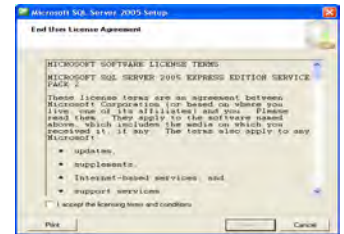
4. While the applications are installing, the server and database are first. The End User License agreement for Microsoft SQL Server 2005 displays, Click the checkbox next to **I accept the licensing terms and conditions** to continue.
5. A list of the required SQL Server Components is displayed. To continue, click **Install**.
If you have a firewall installed on your computer, you may be prompted to allow access to an SQL Server file "sqlservr.exe" during this step of the SQL Server install. Please **allow** access for this file.
6. When SQL Server 2005 and all of the necessary components are installed, click **Next** to continue.
7. To complete the installation of your Microsoft SQL Server 2005, click **Finish**.

After some components are successfully installed, you may be prompted to restart your computer. If you are, click OK to restart.

You once again see the **Switched-On Schoolhouse 2009 Setup Installed Products** window as the Server installation finishes.

The **Switched-On Schoolhouse 2009 - Home Edition Database - AOP Setup** window displays again to walk you through the database installation process step-by-step.

8. Click **Next** on the **Welcome** screen when it displays.





2009 SOS Install and Setup Basics Guide

9. The **Destination Folder & Desktop Icons** screen (for the database) displays. To retain the location where the database is automatically placed, click **Next**.

If you must change this default location, click **Change**, enter the path to the folder you want to use. Click **OK** when finished.

We recommend you leave the SOS database in the default location.

10. The **Setup Information** screen displays. Enter the following information:

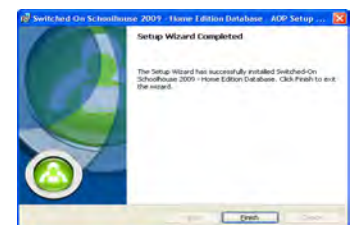
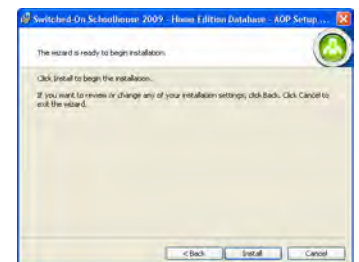
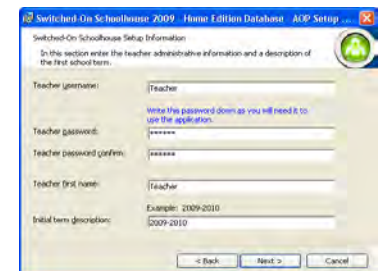
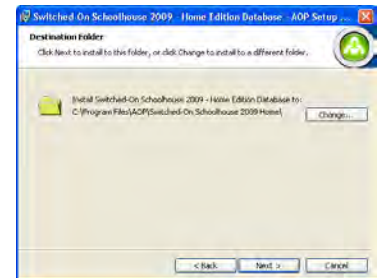
- **Teacher username** (Must be no longer than 12 characters. Only letters and numbers are permitted)
- **Teacher password** – Type in your password.
 - Passwords maybe 1-12 characters long. They are case sensitive and may not contain blank spaces or special characters.
 - Be sure to write down your password. You need it to access SOS Teacher after your installation is complete.
 - See page 37 of this guide for instructions on how to change your teacher password if necessary.
- **Teacher password confirm** – Enter your password again.
- **Teacher first name** - This is what displays on your **Homepage**. It cannot be changed after SOS is installed.
- **Initial term description** (i.e. the name of your school year) – the current school year is the default, you may change it.

11. Click **Next** when you are ready to continue.

12. Click **Install** to continue. This may take several minutes. After it is finished installing a completion screen displays.

13. On the **Setup Wizard Completed** window, click **Finish**. The SOS Database is now finished installing.

14. The wizard is now ready to install the SOS application. Click **Next** to continue.





2009 SOS Install and Setup Basics Guide

15. The SOS **End User License Agreement (EULA)** displays. Read this agreement carefully. If you agree to the terms of the agreement, proceed by clicking the circle next to the **"I agree..."** statement and then click **Next**.

16. On the **Customer Information** screen, enter:

- **User Name:** (Only letters and numbers are allowed. Punctuation marks and other permitted.)
- **Organization:** (This might be your last name or something like "Home".)
- **Serial Number:** (The 16 digit serial number is on the inside front cover of this guide.) Enter it exactly as it appears.

17. The **Destination Folder & Desktop Icons** screen displays. To retain the location where the application is automatically placed and put the shortcut icons for SOS Teacher and SOS Student on your desktop, click **Next**.

If you must change this default location, click **Change**, enter the path to the folder you want to use. Click **OK** when finished.

We recommend you leave SOS in the default location.

To remove the shortcut icons on your desktop, remove the check beside **Add application icons to desktop**, then click **Next**.

18. The wizard is now ready to begin installing the SOS application. Click **Install** to continue.

19. A progress window displays while you are installing. Click **Next** to continue.

20. Click **Finish**.



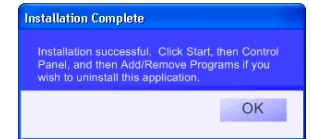


2009 SOS Install and Setup Basics Guide

21. A confirmation box appears. Click **OK**.

22. You should now see the list of all programs needed by SOS. Each should have a checkmark next to it indicating that all were successfully installed. Click **Close** twice, once on the window with the list of applications installed and once on the window with the **SOS 2009-Home Edition** icon (where we started).

You can remove the disc from your CD-ROM or DVD drive. Your full installation of SOS is now complete.



SOS Home Edition – Client Install

The client install allows you to access the SOS database located on another computer on your home network. To complete a client install, you must have already performed a full install on the other computer on your home network.

Be aware, there is a limitation to the client install:

The client install requires a connection to the network at all times to function. Since the client version does not have its own copy of the database; it depends on the computer with the full installation to provide the database. If your home network is down or either computer is removed from the network, SOS will not be able to open.

For example, you might perform a full install on the computer in your office or family room and the client install on the computer in your child's room. We recommend you do the full install on a computer where you can access both SOS Teacher and SOS Student and do the client install on a computer where only SOS Student needs to be accessed.

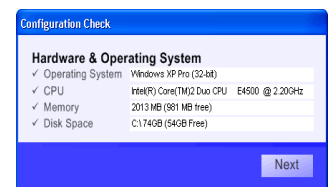
To begin:

1. Insert the SOS application disc into the CD-ROM drive. The **SOS Setup** window displays. Click **SOS 2009 Home Edition – Client**.



A **Configuration Check** window appears. This is to verify that your hardware and operating system meet the SOS minimum requirements. Anything with a checkmark next to it meets minimum standards. An **x** indicates an item NOT meeting minimum standards.

NOTE: You may continue with the installation process, even if not all items meet minimum standards. You may need to upgrade your hardware or operating system for SOS to work effectively.



WARNING:

If you have items listed in the **Windows System** section of this screen, you must fix them prior to continuing or your installation will very likely fail. If there is not a “Click to fix...” link beside an entry, the file must be decrypted. If you need assistance in doing this, please click the **Start** button in the lower left corner of your task bar, and then select **Help and Support**. This process differs depending on your operating system.



2009 SOS Install and Setup Basics Guide

2. A new window opens with a list of the applications SOS needs to install. Programs with a checkmark are already installed on your computer. Any unchecked applications will be installed automatically when you click **Install**.
3. After you click **Install**, the **Confirm Installation** window pops up with a list of the programs to be installed. Click **OK**. The SOS Installer begins installing the needed programs.

NOTE: This process may take some time depending on the applications that must be installed.

Below is a list of all applications needed to run SOS:

- Microsoft Internet Explorer 7 or higher
- Microsoft Windows® Installer 2.0
- Microsoft®.NET Framework 3.0
- Macromedia Flash™ Player 10
- SQL Express 2005
- Crystal Reports for .NET Framework 2.0

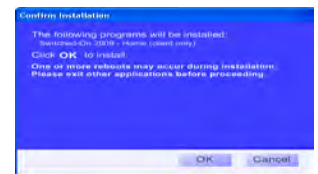
Microsoft Internet Explorer (IE) is not included in the SOS install. It should have been installed when you purchased your computer. Please contact the seller if you do not have IE. You can download IE free by going to www.microsoft.com. Please contact the seller if you have difficulty with this.

NOTE: It is very important that you use IE 7 or higher. If you are currently running IE 6 or below, please download IE 7 before continuing this installation process.

As some components are successfully installed, you may be prompted to restart your computer. If you are, click **OK** to restart.

The **SOS 2009 Setup** window displays again, showing that the last application to be installed is Switched-On Schoolhouse®. While it does not install automatically, it does walk you through the installation process step-by-step.

4. Click **Install** on the **Setup** window to begin. The **Welcome** screen displays. Click **Next**.
5. The End User License Agreement (EULA) displays. Read this agreement carefully. If you agree to the terms of the agreement click the circle beside the **"I agree..."** statement and then click **Next**.
6. On the **Customer Information** screen, enter
 - **User Name** (Only letters and numbers are allowed. Special characters are not permitted.)
 - **Organization**, (This might be your last name or something like "Home".)
 - **Serial Number** (The 16 digit serial number is on the inside front cover of this guide.)





2009 SOS Install and Setup Basics Guide

7. The **Custom Setup Screen** displays. If you want only the SOS Student features installed:

- Select **Teacher** and highlight: **X this feature will not be available**

If you want only SOS Teacher features installed:

- Select **Student** and highlight: **X this feature will not be available**

8. The **Destination Folder & Desktop Icons** screen displays. If you do not want to change the location where the application is automatically placed and you want the shortcut icons for SOS Teacher and SOS Student on your desktop, click **Next**.

We recommend you leave SOS in the default location.

If you must change the default location of the application, click **Change** and enter the pathname to the folder to be used, and then click **OK**.

To remove the shortcut icons on your desktop, remove the check beside **Add application icons to desktop**, then click **Next**.

9. On the **Database Selection** window, locate the computer where your full install resides, either by using the dropdown menu or typing in the computer name followed by: **ISOSHOME309** in the blank textbox. Click **Next** when location has been selected.

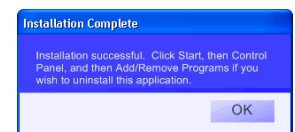
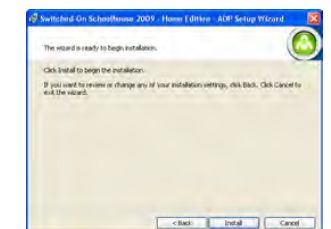
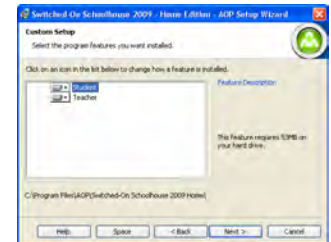
When you click **Next**, the application tries to connect to the database on the computer with the full install. If one is found, continue with Step 11. If a connection cannot be made, a message displays that it could not connect to a valid database. Repeat Step 10 until you have a valid connection.

NOTE: Locate the procedure “Client Installation Troubleshooting” at www.aophomeschooling.com/support/ for further assistance.

10. Once you have successfully located the database connection, the **Ready to Install the Program** screen displays. Click **Install**.

11. After all of your new files are copied, you see the completion confirmation screen. Click **Finish** and **OK**.

12. Click **OK** on the **Installation Complete** message box.





2009 SOS Install and Setup Basics Guide

13. An updated list of the installed applications displays with all of the application names checked. Click **Close**, and then **Close** again.

Don't forget to remove the application disc from your CD-ROM or DVD drive!

Your Client version of SOS is now ready to use.



Upgrading to SOS 2009 Home Edition

If you have an older version of SOS (prior to the 2007 version that you need to remove:

- Go to the **Start** button on your computer's taskbar.
- Select **Control Panel**.
- Select **Add/Remove Programs**.
- Select the program to be removed. (If you need to remove SOS 2009, see the section beginning on page 17 for instructions *before* proceeding.)
- Click **Remove**.

Upgrading from 2008 to 2009

If you are currently running the 2008 version of SOS, you can upgrade directly to the SOS 2009 edition. Your upgrade makes your 2008 data available in the new program, letting you take full advantage of SOS 2009.

If you have the client version installed, you need to upgrade the Full Install BEFORE doing anything with the client installation. After the Full Install has been upgraded, you need to uninstall the 2008 client, and then install the 2009 client application.

If you plan to use 2009 curriculum, you *must* upgrade your application.

The 2008 to 2009 upgrade process automatically backs up your database and restores it for use with the 2009 version of SOS. As a precaution, you should always perform a backup from your existing installation before you install the new version.

Need help doing a backup? Open your existing installation of SOS Teacher, click **Help?** > select **SOS Teacher** > **Application** > **Backing Up Files**.

If you are upgrading from 2008 to 2009, do NOT uninstall your 2008 version of SOS. The upgrade process automatically migrates your data and uninstalls the old version for you. You may notice there are duplicate icons for both SOS Teacher and SOS Student for a very brief time during the upgrade process; this is expected. There will only be one set when the upgrade is done.

To complete your upgrade from 2008:

Go to page 8 of this guide and follow the instructions in the SOS Home Edition - Full install section. If you also need to perform a Client Install (page 12), do this after you finish the Full Install on your primary computer.



2009 SOS Install and Setup Basics Guide

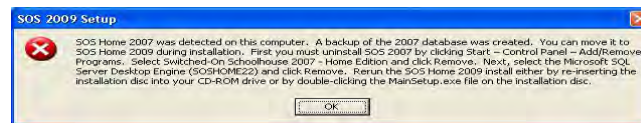
Upgrading from 2007 to 2009

Upgrading is necessary if you plan to use either SOS 2009 or the 2009 curriculum. If you have the client version of SOS 2007 installed, you need to upgrade the full install of 2009 BEFORE you perform any upgrade activity on the client. After the full version install has been upgraded, you need to uninstall the 2007 client, and then reinstall the client using the 2009 installation disc.

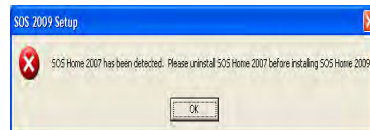
The upgrade process automatically backs up your database and restores it for use with the 2009 version of SOS. As a precaution, you should always create a backup of your existing database before you install the new version.

For help creating a backup, open your existing installation of SOS Teacher, click **Help** > select **User Manual** > select **SOS Teacher** > **Application** > **Backing Up Files**.

1. When you put the **SOS 2009 application disc** in your CD-ROM drive, the first screen you see advises you that a backup of your database has been created and that you must manually uninstall SOS 2007. Click **OK** and remove the application disc.



If you have completed your full install and are now installing the Client, you see a message similar to the one on the next page if you have not already removed SOS 2007.

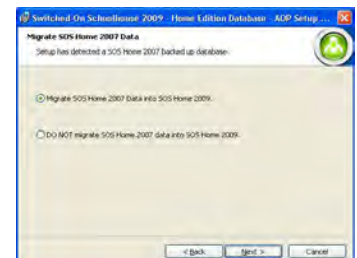


2. To uninstall SOS 2007, click the **Start** button on your computer's taskbar, then select the **Control Panel**.
3. Open **Add or Remove Programs**. (Vista users, click **Programs** > **Programs and Features**.)
4. Remove **Switched-On Schoolhouse® 2007**.
5. Remove **Microsoft® SQL Desktop Engine (SOSHOME22)**.
6. Return the SOS 2008 application disc into your CD-ROM drive. Follow the instructions in the SOS Home Edition - Full install section beginning on page 8.

When you reach Step 18 (of the Full Install), return to this page and continue with **Step 7** below for instructions on migrating your 2007 database to your 2009 application.

7. Click **Next** on the **Migrate SOS Home 2007 Data** screen and then return to Step 18 of the Full Install on page 11.

If you do NOT want to migrate your database to SOS 2009, click the circle next to "Do NOT migrate Home 2007 data...", click **Next** to enter database setup information, click **Next** again, and then return to Step 18 on page 11 to finish your upgrade.



NOTE: If you do not migrate your database, the information it contains will not be available to you or your students in SOS 2009.



2009 SOS Install and Setup Basics Guide

Upgrading from Earlier (than 2007) Versions

If you have a version of SOS older than 2007 installed, you need to uninstall it. SOS 2009 cannot be installed over those older versions. Again, please create a backup of your database.

NOTE: You will *not* be able to migrate a 2006 or earlier database to SOS 2009.

For help doing this, open your existing installation of SOS Teacher, click **Help?** > select **SOS Teacher > Application > Backing Up Files**.

To uninstall:

1. To uninstall your old version of SOS, click **Start** on your computer's taskbar, then select the **Control Panel**.
2. Open **Add or Remove Programs**. (Vista users, click **Programs > Programs and Features**.)
3. Remove **Switched-On Schoolhouse® 200X**. (X being the year of your presently installed version.)
4. Remove **Microsoft® SQL Desktop Engine (SOSHOME22)**.

Removing (Uninstalling) Switched-On Schoolhouse® 2009

WARNING: It is *critical* when removing (uninstalling) the 2009 version of SOS you follow the steps below exactly as written.

1. Open **Add/Remove Programs** in the **Control Panel**.
2. Remove **Switched-On Schoolhouse 2009 – Home Edition**.
3. Remove **Switched-On Schoolhouse 2009 – Home Edition Database**.
4. Remove **Microsoft SQL Server 2005**.
5. On the **Uninstall** dialog window, select the instance of **SOSHOME309** and **Workstation Components**, and then click **Next**.

XP Users: Continue to Step 6 below.

Attention Vista Users:

At this point in the uninstall process, you will see a dialog box similar to the one to the right. When you do, click the **Ignore** button to proceed with your uninstall. Do not click **Retry** or press your **Enter** key. You will just continue to loop back to this dialog box.

6. Click **Finish** to proceed with the uninstallation process.
7. Once the **SQL Server 2005** uninstall is finished, four SQL components remain in your installed programs list. Remove **Microsoft SQL Server Native Client** next.
8. Remove **Microsoft SQL Server Setup Support Files**.
9. Click **Yes** on the confirm removal box.
10. When the warning appears telling you "This action is only valid for products that are currently installed", click **OK**.
11. Repeat Steps 9-10 for **Microsoft SQL Server VSS Writer**, and **MSXML 6.0 Parser**.

NOTE: You MUST remove Microsoft SQL Server 2005 before any of its components are removed or it will not be properly uninstalled and any subsequent installation attempts will fail. If you try to uninstall one of the components first, you will see a warning that the server should be removed first.





2009 SOS Install and Setup Basics Guide

Setting Up Switched-On Schoolhouse® 2009

Before You Begin

The rest of this guide walks you through the basic school level setup you need to get yourself and your students working in SOS as well as a few suggestions to help you make the most of your Switched-On Schoolhouse experience.

Before your students can begin working in SOS, you need to establish your school, students and curriculum. To simplify this process, SOS offers a **Setup Wizard** to walk you through the steps to establish your basic school level setup. The information on the next couple of pages is offered to help you make the best choices for your students. The registration process and the teacher login process are described here, along with some explanation about how the SOS features interact with one another and the impact your choices might have on your students.

Making the Most of Your SOS Setup Screens

SOS lets you decide how your students:

- Process new information
- Are graded for their work
- Progress through the curriculum

So, you need to understand what the options do and how they connect with one another.

SOS is designed so that you set up options for assignments, grades, terms; and quizzes and tests at the *School* level first, the *Student* level second, and the *Subject* level third. Each level gets more specific, enabling you to customize the learning experience for your students according to their needs. For example, if you want all students in your school to be able to play the **Spelling Bee**, leave the checkmark in the checkbox beside **Spelling Bee** in the **Games Access** section of the **School Setup** screen.

Removing the checkmark prevents the students from accessing the game.

Consider this scenario for example. One of your students, Andrew, tends to play **Spelling Bee** repetitively. You want him to spend more time studying his lessons. You go to Andrew's **Student Setup** screen (specific to him only). You remove the checkmark beside **Spelling Bee** in the **Games Access** section of that screen. Finally, you decide that Andrew needs the repetition of the words in **Spelling Bee** in *Science* and you want him to practice as much as possible. To give him access to **Spelling Bee** in *Science*, you put a checkmark in the box beside **Spelling Bee** on Andrew's *Science Subject* screen. You have now set up your school so that:

- At the *School* level all students have access to Spelling Bee
- At the *Student* level, Andrew does not have access to Spelling Bee
- At the *Subject* level, Andrew does have access to Spelling Bee

Every time you go to a more specific level of setup you override the setting on the levels above. Keep in mind: it is very important to know the options you chose at the most specific levels of setup. That way you know what options apply.

When you are deciding between options during the setup process, remember that you can choose to set up options at the *School* level and leave it at that. Setup need be only as specific as you decide.

The information in this guide is for *School* level setup only. You can find instruction on *Student* and *Subject* level setup in the **Help** files in SOS Teacher by pressing the **F1** key.



2009 SOS Install and Setup Basics Guide

Logging In

As a teacher, you use a single account to perform all your administrative functions, including grading student work. You are asked to log in with a teacher password each time you start work in SOS Teacher. This protects your account, blocking others from answer keys, student grades, and teacher controls.

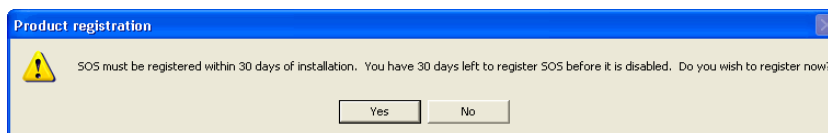


1. Enter your **password** (the one you created during installation – see page 10) in the password field. (Check your caps lock key if you get an error message, it is case sensitive.)
2. Click the **Login** button.

Registration

Switched-On Schoolhouse® requires you to register your software installation. You have 30 days from the time you install the software to complete the registration process. You have the option of registering electronically or by calling AOP Customer Service toll-free at 1-800-622-3070.

When you initially login, you see a message similar to this, click **Yes** to register now.



Register By Telephone

SOS tries to automatically connect you to the registration website. If no connection is made, a screen similar to the one below appears. The toll-free number and your installation serial number are displayed. You will need to provide this number (in **Step 2**) to the customer service representative (CSR). The CSR also asks you for the following information:

- **First and Last Name**
- **Address, City, State**
- **Zip/Postal Code**
- **Country**
- **Email address**
- **Phone number**





2009 SOS Install and Setup Basics Guide

AOP has several optional products / services available that the CSR may offer you. For example, if you want to receive the **Daily Focus**, a daily devotional or the **Homeschool View**, an electronic newsletter, you will also be asked to provide your e-mail address.

The CSR will give you a **registration code** when the process is complete. You must enter it into the four boxes in **Step 4** on the screen exactly as given. We recommend that you write it down and keep it in a secure place, possibly on the sticker with your serial number in the front of this guide. Click **OK** when you are finished. Remain on the line with the CSR until you have a message confirming your successful registration.

Registering On-line

If an internet connection is detected, an account login screen similar to the **SOS Online Registration** screen to the right is displayed.

An **SOS Online Registration** screen like the one below appears. Notice your serial number is already populated. Please complete the form by entering:

- **First and Last Name**
- **Address, City, State**
- **Zip/Postal Code**
- **Country**
- **E-mail Address**
- **Phone Number**

Next, you see a list of optional products and services AOP offers, for example the **Daily Focus**, a daily inspirational devotion for homeschool families or the **Homeschool View**, an electronic newsletter for homeschool families. Leave the checkmark beside the ones you want to receive.

Click **SUBMIT** to finish your registration. A new window opens with a message confirming the successful registration of your SOS software installation. This message includes your *registration code*. Please, write this number down and keep it in a secure location (like the front cover of this guide) or print the page and put it in a safe place. Click **OK** on this message screen after noting the registration number.

Should you misplace either your serial number or registration number, you can find them on the **About** page of your SOS application. Click the **SOS logo** on your **Home** page for access.

Online Product Registration

SOS Online Registration

Please complete your online registration of Switched-On Subhouse with the form below. It's brief and only takes a few moments to complete. (Note: You will have to scroll down the page to complete it fully and then click the Submit button to finish.)

Serial Information

Case-sensitive. Enter exactly as it is written, including dashes.

Serial Number: XXXX-XXXX-XXXX-XXXX

Customer Information

First Name: Bob & Janet
Last Name: Stewart
Email Address: janestewart
Phone Number: 488-035-9078

Mailing Address

Address 1: 300 N. Hickory
Address 2:
City: Chandler
State / Province: Arizona
Zip / Postal: 85226
Country: United States

Communication Preferences

Homeschool View - A free monthly e-newsletter containing tips, stories, and information about AOP products, special offers, events, homeschooling best practices, and more.



2009 SOS Install and Setup Basics Guide

Register Later

If you choose not to register your product immediately, you can access the application for up to 30 days after installation. Each time you open your *Teacher* application you see a registration reminder with the number of days you have to register before your software is disabled.

Click **Yes** anytime you see this message to register.

If you do not register by the end of the 30 day grace period, a message appears on day 30 advising you that SOS will be disabled if you do not register today.

Click **Yes** to register now and follow the procedures on pages 19 – 20.

If you have not registered by day 31, a message appears when you open SOS Teacher advising you that SOS has been disabled and cannot be opened until the product has been registered.

Click **OK** to register the product at this time. On day 31, your student also sees a message advising them that they cannot open SOS Student until the product has been registered.

SOS Setup Wizard

The first time you login to SOS Teacher, the **Setup Wizard** appears. It walks you through the initial setup steps for your school. You can:

- Add a new school term if you need. Remember, you added one during installation. (See page 10.) (You must add a new school term for each new school year, if you want to keep your SOS School records organized.)
- Customize calendars for school terms
- View the calendar you just created
- Add students
- Install curriculum and assign subjects

When you click the **Finish** button at the end of the **Setup Wizard**, the basic setup for SOS is complete. You and your students can immediately begin working. To customize assignment or grade options for your school or change options for a specific student or subject, please see the electronic Help file (press **F1**) for step-by-step instructions. You can also access the Help file by clicking the **Help** button on your **Home** screen and selecting **User Manual**.

Note: Switched-On Schoolhouse includes a tutorial, “How to Use the Setup Wizard”. It walks you through a basic school setup.

To access the tutorials, click **Start** on your computer’s taskbar, and then select **All Programs > AOP > Switched-On Schoolhouse > Tutorials**; or if you have the **Tutorials** shortcut icon on your desktop, just double-click it.

The **Setup Wizard** may also be viewed online at www.sostutorials.com. See a complete listing of available tutorials on page 30 of this booklet.



2009 SOS Install and Setup Basics Guide

Ready to Begin?

Click **Next** to begin your setup process or click **Cancel** to exit the **Setup Wizard**.

Setting Up a School Term

School terms are important because you cannot assign schoolwork to your students without them. There are a couple of important points to keep in mind as you work with terms:

- A student can only work in ONE term at a time. If you assign work to a student in more than one term, you must switch their active term each time they need to work on an assignment from the non-active term. Though there is a **View Other Term** button in SOS Student on the **Schoolwork** screen, it does not allow students to work in other terms. This button only allows them to see what work is assigned to them in any other school term. They cannot perform any work on assignments in other terms until you change their active term using the SOS Teacher program.
- Terms help you keep SOS School records organized. You should create a new term for each new school year.

If you want to use the school term you created when you installed Switched-On Schoolhouse® 2009, click **Next** at the bottom of the **School Term** screen and skip to the *Customizing a Calendar* section of this guide on page 23.

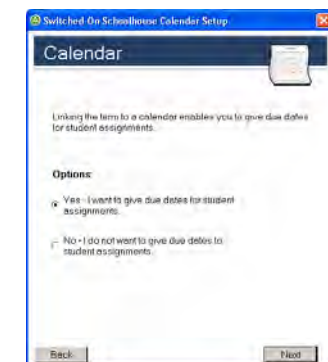
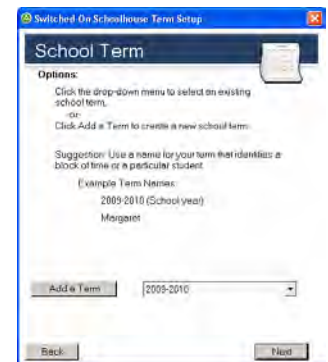
If you do need to create a new term:

1. Click **Add a Term** on the **School Term** screen.
2. Type in the name you want to assign to the school term.
3. Click **Save Term**.
4. Click **Next** to see the **Calendar** screen appear.

Creating a Calendar

Creating a calendar allows you to assign due dates to student assignments. Due dates help students know how much work must be done each day so they can complete their assigned work by the end of the school year. When due dates are turned off, students must pace their schoolwork.

1. Determine if you want to assign due dates:
 - Select **Yes** if you want to assign due dates to student assignments.
 - Select **No** if you do not want to assign due dates to student assignments.
2. Click **Next** to continue.
3. Click the circle next to the type of calendar you want to use:
 - **I want to use a Traditional calendar** - this calendar begins the day after Labor Day and lasts 180 school days, excluding time taken off for holidays. You can change the pre-set holidays or school days as necessary for your school.
 - **I want to use a Custom calendar** – this calendar allows you to choose the start and end days of the term as well as assigning any holidays to be included. It is useful if you need to start a term at a time not usually associated with the start of the school year or if you want to compress a school year.
4. Click **Next** to continue.





2009 SOS Install and Setup Basics Guide

5. If you chose a traditional calendar, select the school year using the up and down arrows, and then click **Next** to continue.

If you chose a custom calendar, you need to select start and end dates for your calendar. To do this:

- Select the **End Date** for your school year, and then select the **Start Date** for the school year.
- Click **Next** to continue.

Note: You must select the **End Date** first. If you try to enter the **Start Date** before you enter the **End Date**, SOS will not allow you to select a date beyond today's date.

Customizing Your Calendar

After you have determined the type of calendar you want to use, you are ready to customize the calendar. This means you can change school days to non-school days and vice-versa. You can choose to change individual days or a series of days. You may do this now or at any time during the school term. Just press **F1** to access the electronic **Help** file for step-by-step instructions or watch the tutorial for a video demonstration.

1. Click **No** if you do not want to customize your calendar, or if you would rather customize it later. Click **Next** to continue. Skip to the *Viewing the Calendar* section below.

Click **Yes** if you want to customize your calendar now, and then click **Next** to continue.

2. Set each date or range of dates individually. To choose specific dates for things like holidays and vacation:
 - Select the **Start Date** and **End Date** of the period you want to customize. (Remember, select the **End Date** first!)
 - Enter the **Description** for the date range, for example, "Family Reunion" or "Weather Catch-up Days".
 - Select **Yes** to designate these days as school days or select **No** if these days are not to be considered school days.
3. Click **Customize more days** if you want to add more custom dates and return to Step 2.
4. Click **Finished** when you have entered the last date you want to customize. A confirmation box appears asking you to select **Yes** if you are finished customizing calendar dates.



2009 SOS Install and Setup Basics Guide

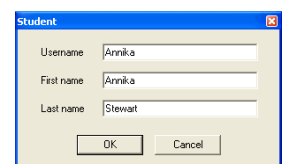
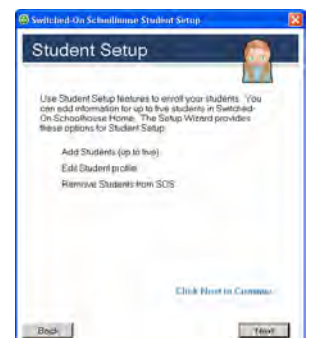
Viewing the Calendar

1. Click **View Calendar** to see your selected school term.
After you view the calendar, click **Save** to retain the changes you made to the calendar or **Cancel Changes** to start over customizing dates.
2. Click **Next** to continue or
Click **Back** to return to **Custom Dates** to make additional changes.

Adding Students

Before students can get started in SOS Student, you need to “enroll” them in your school. SOS allows you to have up to five students working in SOS at once. If you want students to use a password to login, you need to set this up after you complete the **Setup Wizard**. You can press the **F1** key to access the electronic Help file for instructions on setting up a student password. The Student Setup function allows you to add students, edit student profiles or remove students from SOS. For now we are going to add students.

1. To add students, click **Next** on the first **Student Setup** screen to begin.
2. If your student’s name is not already displayed on the screen, click **Add** to open a small window where you can enter the student name and username.
3. Enter the **Username**. (This is the name SOS uses for the student, just like your teacher name. Use only letters and/or numbers. No periods or other special characters are accepted.)
4. Enter the student’s **First name** and then **Last name**.
5. Click **OK** to see the student information appear in the large white box at the bottom of the **Student Setup** screen.
6. Click **Add** to add any additional students, **Edit** to make changes to a selected student, **Remove** to delete a selected student, or **Next** if you are done and ready to continue.





2009 SOS Install and Setup Basics Guide

Installing Subjects

Before students can begin work in SOS Student, you need to install curriculum and assign it to them. Make sure you have your curriculum disc(s) handy before you begin.

1. Click **Next** on the **Curriculum Setup** screen to begin.
2. Put the A disc for one of your subjects in the the CD-ROM or DVD drive and click **Install**.
3. Select the **contents.sosx** file and click **Open**.
4. Select **Leave on CD-ROM** if you want your student(s) to access the subject using the disc(s)
or
Select **Copy to Drive** if you want to install the subject onto your computer hard drive.
5. Click **OK**.
6. If you chose **Leave on CD-ROM**, go to Step 7.
If you chose **Copy to Drive**, a window opens asking you to **Browse to folder**. Select the **(C:)** drive and click **OK**. (You may choose another location provided there is enough free space on that drive.)

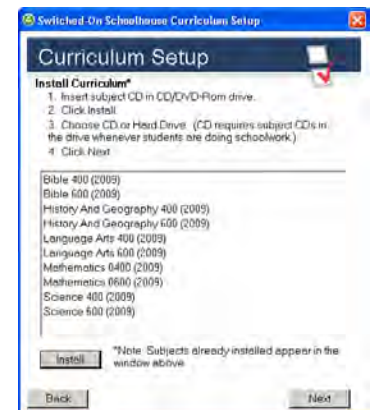
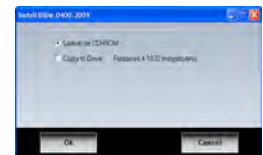
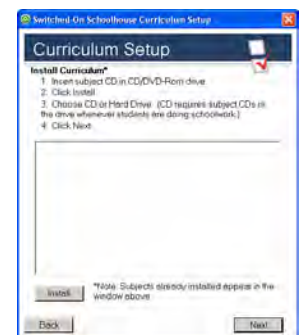
Note: We suggest putting your entire curriculum for a school year in one common folder on the drive.

7. SOS begins copying the subject to the selected drive. If the subject has more than one disc, SOS prompts you when to put in the next disc.

Perform Steps 2 – 7 until you have installed all of the subjects you intend to assign, and then click **Next**.

Remember: If you do NOT load the subject onto your hard drive, the student must have the disc in the CD-ROM or DVD drive when working on the subject.

Note: Please see the **Setup Wizard** tutorial “How to Install a Subject” for additional assistance.



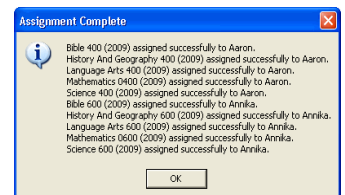
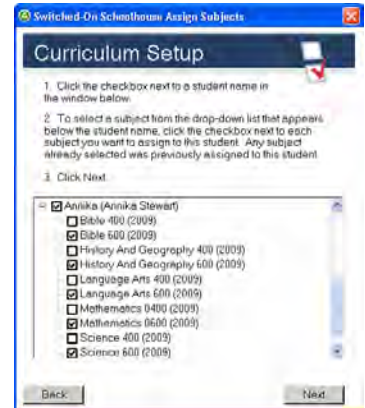


2009 SOS Install and Setup Basics Guide

Assigning Subjects

Now that you have installed your subjects, they can be assigned to your students. Assign each subject to the students who will be taking the course **before** you click **Next**. SOS allows you to assign multiple subjects to each student before you move on to the next screen.

1. On the bottom half of the **Curriculum Setup** window, you see a list of your students, click the checkbox next to a student name. A list with all of the subjects you installed appears below each student's name.
2. Below each student's name, click the checkbox beside each subject you want to assign to the student.
Repeat Steps 1 – 2 to assign subjects to additional students.
3. Click **Next** when you are finished.
4. Click **OK** on the **Assignment Complete Confirmation** box that appears.



Assigning a Sample Lesson

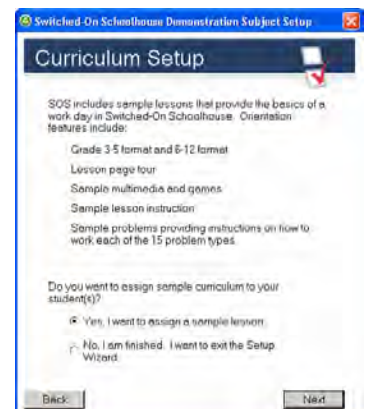
SOS includes a sample lesson to allow both you and your students to walk through a lesson experience. It should help both of you to learn about each feature and how to use it. The sample lesson also offers the opportunity to “try out” or practice the various problem types without concern for the impact to grades.

There are two choices of sample lesson; one for students in grades 3 – 5, and one for students in grades 6 – 12. Each one covers the same explanation and features. They are just presented in more age appropriate context.

1. If you do not want to assign a sample lesson, click the circle beside **No, I am finished. I want to exit the Setup Wizard**; and click **Next** at the bottom of the screen to exit the **Setup Wizard**.

If you do want to assign the sample lesson to a student, click the circle beside **Yes, I want to assign a sample lesson** and continue with Step 2.

2. Click the checkbox beside the **Sample Lesson** you want to assign under each student's name (just as you did to assign the regular subjects).
3. Click **Finish** on the **Assignment Complete Confirmation** box when you have selected the sample lesson(s) for each student.



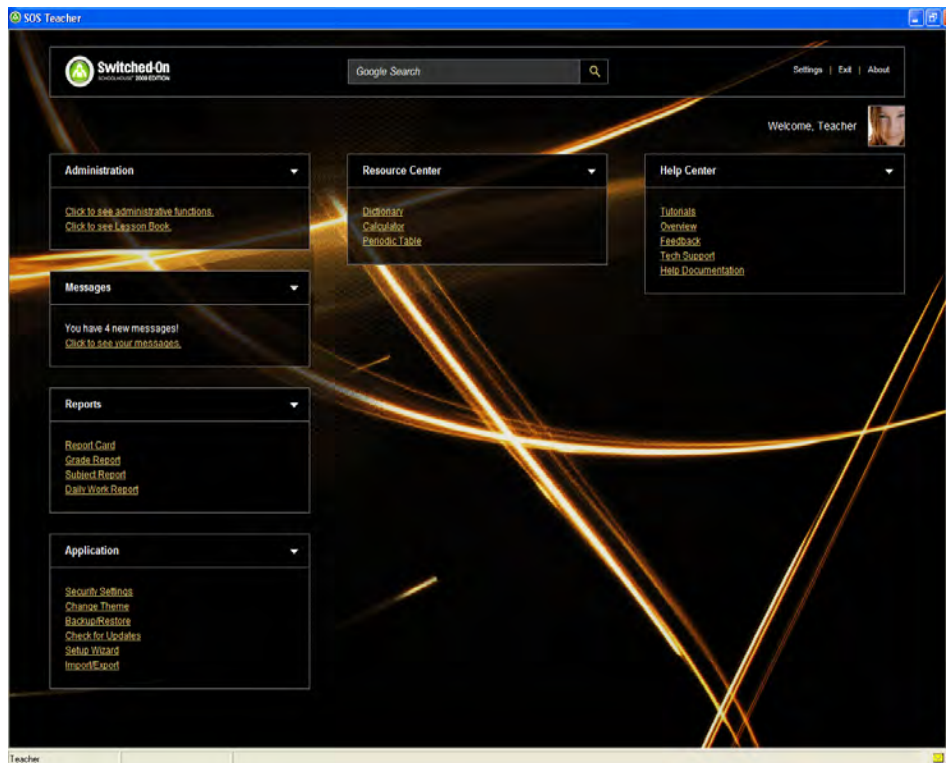


2009 SOS Install and Setup Basics Guide

SOS Setup Completion / Homepage

Click **OK** when the **How to Run the Setup Wizard** box appears. (You only see this the first time the **Setup Wizard** runs.)

You now see your **Teacher Home** screen. You can use any of the functions of SOS Teacher from this location. Press **F1** or click the **Help Documentation** link (in the **Help** widget) to access the electronic Help files for additional assistance.



The new MiSOS format uses two new terms:

Avatar: the small picture to the right of your name in the upper right corner of your **Homepage**.

Widget: these are the boxes on the **Homepage** containing the sections of SOS plus the new options available to you. For example, all of your administration, application, and report functions are in separate boxes (widgets). You can also choose to have a Daily Bible Verse widget and RSS Feeds, each in a separate widget.

Please visit the **Help** file (F1), select **User Manual**, and open **Teacher Home Screen** and **MiSOS Custom Theme** under **Getting Started** for information about how to use these items.

NOTE: If your **Home** screen looks like the picture to the right and you cannot access the other themes, you must upgrade your version of Internet Explorer to IE 7 or higher.





2009 SOS Install and Setup Basics Guide

Help Resources

The **Help** function/button provides access to several Switched-On Schoolhouse's (SOS) products and services. You can use it for any of the following:

- User Manual**—immediately opens the SOS **Help** files. You can still press **F1** from anywhere in the application to access **Help** also. If you press **F1** on many of the forms and pages within SOS, the application takes you directly to the information for that form or page.
- SOS Tutorials**—enables you to open the SOS tutorials from within the application for a quick example of how to perform many functions within SOS.
- SOS Overview**—offers you a high level presentation of the many features available in SOS.
- Content Feedback**—provides a quick and easy access method to send AOP feedback about curriculum concerns.
- Tech Support**—lets you access the SOS Tech Support website directly.

User Manual

The first option opens the online (electronic) **Help** file. Basically, it includes most of the SOS printable user manuals, such as this one. Installation information is not included, however. It does include instructions on how to use the three views available in the **Help** file, *Contents*, using the *Search* capability, and the *Index*.

Tutorials

The next option is the tutorials that show you a demonstration how to perform some of the functions you use in SOS. A list of them and your options for locating them are detailed on page 30 of this guide.

SOS Overview

Next, is a presentation series of videos providing an overview of the functions available in SOS and an opportunity to view sample pages of the SOS curriculum. See page 31 of this guide for an alternative means of locating them.

Content Feedback

Click **Content Feedback** to open the Tech Support page of the AOP Homeschool website. There you find a link to open a form to let the SOS team know you have comments or an issue with something in the curriculum.


Tech Support

Select this option to open the Tech Support page of the AOP Homeschool website where you will find a number of options to assist you as you use Switched-On Schoolhouse®.

Exiting SOS Teacher

Ready to close SOS? From your **Home** screen, you have three options for exiting SOS:

Click the **Close** button () in the upper right-hand corner.

Click the **SOS icon** () in the upper left-hand corner and select **Close** from the small menu that appears.

Press **Alt+F4** on your keyboard.



2009 SOS Install and Setup Basics Guide

Activities Away from the Computer

Looking to add a bit of variety to your student's day? Switched-On Schoolhouse® also offers student activities that encourage learning away from the computer. Below are suggestions for off-computer tasks:

Special Projects

Each unit contains an assignment called "Special Project." This is a blank assignment available to teachers who want to create their own assignments and incorporate them into the grading system. Teachers can encourage artwork, model-building, map work, etc.

Experiments

Although science experiments are demonstrated for students through video clips, there's nothing like hands-on learning. Students will find a listing of the materials and procedures required for various experiments, enabling them to actually do the experiments at home.

Novels

Language Arts 900-1200 come with paperback novels. Students can find unit lessons in Switched-On Schoolhouse® to guide them as they read the novels.

Research

Students often need to go on field trips or make visits to a library or museum. They may also need to access other reference sources outside of Switched-On Schoolhouse® for their research. Teachers can use the adjustable calendar and lesson planning to schedule time for students to do research away from the computer.

Lesson Printouts

Printing out Switched-On Schoolhouse® assignments can be useful if there are several students sharing only one computer, or if students want to work where there's no access to a computer. Students can go through lessons on paper or even use the printed sheets to review for quizzes or tests. Printing vocabulary or spelling list words also allows students to study definitions and practice spelling away from the computer.

Handwritten Notes

To keep their skills up for non-computer-based courses, students, especially high school students, should regularly practice taking notes by hand while completing assignments on the computer. They can also use their notes to study from while they are away from the computer.

Hands-On Experience

Teachers can take advantage of opportunities to make practical application of what students are studying. If students are studying about measurement, for example, teachers can move the "classroom" into the kitchen and teach students how to bake cookies. If students are studying plants, growing an indoor or outdoor garden can help them to tangibly see the scientific principles. Teachers who are creative and involved in what their students are learning can come up with almost anything to effectively supplement learning on Switched-on Schoolhouse®.



2009 SOS Install and Setup Basics Guide

Tutorials

Before you get too far along in using SOS, you might want to spend a little time reviewing the tutorials. They walk you through a number of functions you perform as a teacher. All of these tutorials are available on your computer after you install SOS 2009. All of the tutorials below are available on your computer after you install SOS 2009. To view them on your computer, double-click the desktop **Tutorials** icon or:

1. Click **Start** on your computer's taskbar.
2. Click **All Programs**.
3. Select **AOP**.
4. Select **Switched-On Schoolhouse 2009**.
5. Select **Tutorials**.

Tutorials

- How to Use the Setup Wizard
- How to Add a New Term
- How to Set Homepage Settings
- How to Use the MiSOS Custom Theme
- How to Change Between School Days and Non-School Days
- How to Exclude a Range of Days
- How to Add Events to Student Calendars
- How to Install a Subject
- How to Assign a Subject
- How to Install Curriculum Revisions
- How to Clear an Assignment
- How to Remove an Assignment
- How to Create Custom Subjects and Assignments
- How to Remove a Duplicate Subject
- How to Create a Lesson Plan
- How to Update Lessons Plans (Regenerate Due Dates)
- How to Block and Unblock Individual Assignments
- How to Globally Block and Unblock Quizzes and/or Tests
- How to Record in Spanish



2009 SOS Install and Setup Basics Guide

SOS Overview Presentation

Switched-On Schoolhouse also offers another view of the program. It is called the SOS Overview Presentation. It includes:

1. Teacher Home Page
2. Administration - Assignment Settings
3. Administration - Quiz and Test Settings
4. Administration - Grading and Term Settings
5. Administration - Student Setup
6. Administration - Curriculum Setup
7. Lesson Book - Assignments
8. Lesson Book - Lesson Plan
9. Student - Homepage
10. Student - Schoolwork
11. Student - Lesson Presentation

You can access this presentation by clicking the **Help** button on your **Home** screen and selecting **SOS Overview** from the menu.

You can also access them by going to www.aophomeschooling.com, then:

1. Click **Curriculum Options**
2. Select **Grades**
3. Click the **grade level** or **subject** folder
4. Click the **SOS box** or specific **subject CD**
5. Click the **Resources** tab in the middle of the page



2009 SOS Install and Setup Basics Guide

Switched-On Schoolhouse Home Edition Legal Terms & Conditions

By using or allowing others to use the software, curriculum, materials, and documentation (“Software”) accompanying this Agreement, you (the “User”) are agreeing to be bound by these legal terms and conditions (“Agreement”). If you do not agree to the terms and conditions of this Agreement, do not use this Software. Any person interacting with the Software in any way, including but not limited to students, teachers, administrators, and parents, are Users for the purposes of this Agreement. Certain terms of this Agreement may not apply to your use of the Software however all applicable terms are nonetheless binding. Alpha Omega Publications, Inc. (“AOP”) reserves the right to change or terminate the terms of this Agreement at any time and from time to time without any notice to you by posting said changes on the AOP website. Any such changes are hereby incorporated into this Agreement by reference as though fully set forth herein.

General Provisions

- 1. Indemnification.** You, the User of this Software, agree to indemnify and hold AOP, its subsidiaries, affiliates, and assigns, and each of their directors, officers, agents, contractors, partners and employees, harmless from and against any loss, liability, claim, demand, damages, costs, and expenses, including reasonable attorneys’ fees, arising out of this Agreement or in connection with any use of the Software including but not limited to any damages, losses, or liabilities whatsoever with respect to damage to any property or loss of any data arising from the possession, use, or operation of the Software by the User or any customers, users, students, or others.
- 2. Termination.** This Agreement shall remain in effect until terminated. This Agreement may be terminated at AOP’s sole discretion and without prior notice, by mutual written agreement between the parties, but not by the User. This Agreement will terminate automatically without notice from AOP if you or any other person or entity using the Software violates any provision of this Agreement. AOP shall not be liable to you or any third party for any termination. Upon termination, you or any other person using the Software shall cease to use and destroy the Software or return the Software to AOP at your expense.
- 3. Updates.** At its option, from time to time, AOP may create updated versions of the Software and may make such updates available to you either for a fee or for free. Unless explicitly stated otherwise, any such updates will be subject to the terms of this Agreement including any amendments to this Agreement, to be determined in AOP’s sole discretion.
- 4. Proprietary Materials.** All content, software, and materials contained in or related to the Software are protected by copyrights, trademarks, service marks, patents, trade secrets, or other proprietary rights and laws. You hereby agree not to sell, license, rent, modify, distribute, copy, reproduce, transmit, publicly display, publicly perform, publish, adapt, edit, or create derivative works from such content or materials.



2009 SOS Install and Setup Basics Guide

5. **Disclaimer of Warranty.** The Software is provided “as is”, with all faults and without warranty of any kind. AOP HEREBY DISCLAIMS ALL WARRANTIES WITH RESPECT TO THE SOFTWARE, EITHER EXPRESS, IMPLIED, OR STATUTORY, INCLUDING BUT NOT LIMITED TO THE IMPLIED WARRANTIES OF MERCHANTABILITY, OF SATISFACTORY QUALITY, OF FITNESS FOR A PARTICULAR PURPOSE, OF ACCURACY, OF QUIET ENJOYMENT, AND NON-INFRINGEMENT OF THIRD PARTY RIGHTS. AOP DOES NOT WARRANT, GUARANTEE, OR MAKE ANY REPRESENTATIONS THAT THE CONTENT IS ACCURATE, RELIABLE, OR CORRECT OR THAT IT WILL MEET YOUR NEEDS OR REQUIREMENTS, THAT THE SOFTWARE WILL FUNCTION AT ANY PARTICULAR TIME OR LOCATION, THAT ANY DEFECTS OR ERRORS WILL BE CORRECTED, OR THAT THE SOFTWARE IS FREE OF VIRUSES OR OTHER HARMFUL COMPONENTS. You assume the entire risk as to the quality, results, and performance of the Software as well as the entire risk and cost of all service, repair, or correction. No oral or written information, advice, suggestions, or recommendations given by AOP, its representatives, dealers, distributors, agents, or employees shall create a warranty or in any way increase the scope of this Agreement and you may not rely on any such information, advice, suggestions, or recommendations. Some jurisdictions do not allow the exclusion or limitation of certain warranties or consumer rights so some exclusions and limitations may not apply to you.

6. **Limitation of Liability.** You hereby agree that AOP, its subsidiaries, affiliates, and assigns, and each of their directors, officers, agents, contractors, partners and employees, shall not be liable to you or any third party for any indirect, special, consequential, or incidental damages including but not limited to damages for loss of profits, business interruption, loss of business opportunity, loss of data, or any other hardship, damages, or losses arising out of or related to the use or inability to use the Software, however caused, and even if AOP has been advised of the possibility of such damages. Some jurisdictions do not allow the exclusion or limitation of certain remedies or damages so some exclusions and limitations may not apply to you.

7. **Severability.** If any provision of this Agreement is held to be ineffective, unenforceable, or illegal for any reason, AOP may reform such provision to the extent necessary to make it effective, enforceable, and legal or such provision shall be deemed severed and in either case this Agreement with such provision reformed or severed shall remain in full force and effect to the extent permitted by law.

8. **Controlling Law and Controversies.** This Agreement shall be governed by the laws of the State of Arizona and of the United States. If any controversy or claim arising out of or relating to this Agreement cannot be solved by negotiation between the parties, the parties hereby agree to attempt in good faith to settle the dispute through mediation administered by a mutually agreed upon mediator in Phoenix, Arizona and in accordance with the Rules of Procedure for Christian Conciliation of the Institute for Christian Conciliation, a division of Peacemaker® Ministries. If mediation fails to resolve the dispute, the parties hereby agree that the dispute shall be settled through arbitration administered by a mutually agreed upon arbitrator in Phoenix, Arizona and in accordance with the Rules of Procedure for Christian Conciliation of the Institute for Christian Conciliation, a division of Peacemaker® Ministries. Judgment upon an arbitration decision may be entered in any court otherwise having jurisdiction.

9. **Entire Agreement.** This Agreement constitutes the entire agreement between AOP and the User relating to the subject matter hereof and supersedes all prior understandings, promises, and undertakings, if any, made orally or in writing with respect to the subject matter hereof. No modification, amendment, waiver, termination, or discharge of any portion of this Agreement shall be binding unless executed and confirmed in writing by AOP.



2009 SOS Install and Setup Basics Guide

10. Export Prohibitions. You may only export the Software as authorized by United States law and the laws of the jurisdiction in which you reside. Any export of the Software or any portion thereof in any way prohibited by law or regulations issued by agencies of the United States federal government is hereby prohibited. Portions of the Software may include restricted computer software. Neither the Software nor any portion thereof nor the underlying information or technology may be downloaded or otherwise exported or re-exported: (a) into (or to a national or resident of any U.S. embargoed country; (b) to anyone on the U.S. Treasury Department's list of Specially Designated Nationals; or (c) to the U.S. Commerce Department's Denied Persons or Entities List or Table of Denial Orders. You hereby represent and warrant that you are not located in or the resident of any such country or on any such list.

End User Terms and Conditions

1. **Ownership.** This Software and associated materials are the property of AOP. The Software is licensed, not sold, to you under the terms of this Agreement. AOP does not sell any title, ownership right, or interest in or to the Software. By using this Software, you are agreeing only to a personal, non-exclusive license to use, according to the terms of this Agreement, the Software and any software programs or other proprietary material of third parties that are incorporated into the Software. You own the media on which the Software is recorded but AOP reserves and retains all other right, title, and interest (including but not limited to copyrights, patents, trademarks, and service marks) in and to the Software. The remuneration paid for this product constitutes a license fee for the use of the Software.
2. **Use.**
 - (a) This Agreement allows you to install and use one copy of the Software on one computer at a time. It is prohibited to electronically transfer the Software from one computer to another (over a network or otherwise) or to use the Software on more than one computer except as expressly provided in paragraph 2(d) of the End User Terms and Conditions herein. No more than five (5) students may use one copy of the Software.
 - (b) The copying, reproduction, duplication, translation, reverse engineering, adaptation, compilation, disassembly, reverse assembly, modification, or alteration of the Software or any portion thereof is expressly prohibited without the prior written consent of AOP except as provided for herein. The merger or inclusion of the Software or any portion thereof with any other computer program, and the creation of derivative works or programs from the Software or any portion thereof, is also expressly prohibited without the prior written consent of AOP. One copy of the Software may be made in machine-readable format only, for backup purposes only, and the backup copy must contain terms, conditions, privacy policies, copyright, and other proprietary notices contained in the original.
 - (c) Neither the Software nor any part thereof may be rented, leased, sold, assigned, transferred, re-licensed, sub-licensed, or conveyed for any purpose except as expressly provided in paragraph 2(d) of the End User Terms and Conditions herein. Any attempted rental, lease, sale, assignment, transfer, re-license, sub-license, conveyance, gift, or other disposition of the Software in violation of this Agreement is null and void. Any act or failure to prevent an act in violation of this Agreement may result in civil and/or criminal prosecution.



2009 SOS Install and Setup Basics Guide

- (d) The initial and original User of the Software may make a single one-time permanent transfer of the Software, including all materials, media, component parts, upgrades, serial number, and back-up copy, only directly to an end user and only for no monetary or other compensation. Such transfer may not be for trade or by way of consignment or any other indirect transfer. Any transferee of such one-time transfer hereby agrees to comply with the all terms and conditions of this Agreement, including the prohibition of any further or subsequent transfers of the Software. The transferor in such one-time transfer must destroy all duplicate copies of the Software prior to the transfer. All parties hereby acknowledge and agree that no technical support privileges or warranty of any kind is transferred to the transferee of such one-time transfer. The transferee of such one-time transfer hereby assumes all risk as to the quality, results, and performance of the Software as well as the entire risk and cost of all service, repair, or correction of the Software and releases AOP from any and all responsibility for performance of the Software.
- (e) Programs or software developed and/or owned by entities other than AOP and included with or incorporated into the Software (“Third Party Software”) is subject to and its use is governed by this Agreement. The use of Third Party Software except as for any purpose other than its intended use in conjunction with the Software is prohibited.
3. **Third Party Sites and Content.** The Service contains (or may send you through or to) links to other websites (“Third Party Sites”) as well as articles, photographs, text, graphics, pictures, designs, music, sound, video, information, applications, software, and other content or items belonging to or originating from third parties (“Third Party Content”). AOP does not check such Third Party Sites and Third Party Content for accuracy, appropriateness, or completeness and AOP is not responsible for any Third Party Sites accessed through use of the Service or for any Third Party Content posted on, available through, or installed from the Service, including the content, accuracy, offensiveness, opinions, reliability, privacy practices, or other policies of or contained in the Third Party Sites or the Third Party Content. Inclusion of, linking to, or permitting the use or installation of any Third Party Site or any Third Party Content does not imply approval or endorsement thereof by AOP.

Third Party Notices

New American Standard Bible Updates

© 1960, 1962, 1963, 1968, 1971, 1972, 1973, 1975, 1977, 1995
by The Lockman Foundation
All rights reserved
<http://www.lockman.org>

The “NASB”, “NAS”, “New American Standard Bible” and “New American Standard” trademarks are registered in the United States Patent and Trademark Office by the Lockman Foundation. Use of these trademarks requires the permission of the Lockman Foundation.

The text of the New American Standard Bible® may be quoted and/or reprinted up to and inclusive of five hundred (500) verses without express written permission of The Lockman Foundation, providing the verses do not amount to a complete book of the Bible nor do the verses quoted account for more than twenty-five percent (25%) of the total work in which they are quoted.



2009 SOS Install and Setup Basics Guide

Notice of copyright must appear on the title or copyright page of the work as follows:

Scripture taken from the New American Standard Bible,
© The Lockman Foundation 1960, 1962, 1963, 1968, 1971,
1972, 1973, 1975, 1977, 1995

Used by permission. <http://www.Lockman.org>

When quotations from the NASB® text are used in not-for-sale media, such as church bulletins, orders of service, posters, transparencies, or similar media, the abbreviation (NASB) may be used at the end of the quotation. This permission to quote is limited to material which is wholly manufactured in compliance with the provisions of the copyright laws of the United States and all applicable international conventions and treaties. Quotations and/or reprints in excess of the above limitations or other permission requests must be directed to and approved in writing by The Lockman Foundation, P.O. Box 2279, La Habra, CA 90632-2279, (714) 879-3055, <http://www.lockman.org>.

Copying, duplicating, altering, or otherwise modifying the NASB databases is prohibited.

Adobe® Trademark/Copyright Notice:

Switched-On Schoolhouse® contains Adobe® Flash® Player software by Adobe Systems Incorporated, Copyright © 1995-2008 Adobe Systems Incorporated. All rights reserved. Protected by U.S. patents and patents pending in the United States and other countries. “Adobe” and “Flash” are trademarks of Adobe Systems Incorporated.

Component One® Trademark/Copyright Notice:

Portions Copyright © ComponentOne, LLC 1991-2008. All rights reserved.

Keyoti Trademark/Copyright Notice

This product contains RapidSpell spell checking software. Copyright © 2002-2008 Keyoti Inc.

Microsoft Trademark/Copyright Notice

Microsoft SQL Server 2005 Express, Microsoft.NET, and Microsoft Internet Explorer are either registered trademarks or trademarks of Microsoft Corporation in the United States and/or other countries. All rights reserved.

AOP Contact Information

Alpha Omega Publications, Inc.
Attn: Legal Department
300 North McKemy Ave.
Chandler, AZ 85226

Switched-On Schoolhouse, Switched-On, and their logos are registered trademarks of Alpha Omega Publications, Inc. All other trademarks and/or service marks that appear in this product are the property of their respective owners. All rights reserved.

© 2003, 2005, 2007, 2008 Alpha Omega Publications, Inc.

All rights reserved.



2009 SOS Install and Setup Basics Guide

Forgot Your Teacher Password?

SOS does not limit how many times you can try your password. SOS does have a data utility on the SOS application disc you can use to change or reset your password.

Remember:

- Your password is case sensitive, so check to see if your Caps Lock key is on.
 - If your password is longer than 12 characters, you will get an error.
-

1. Put the SOS installation disc into the CD-ROM or DVD drive of your pc.
 2. If the **Install** window opens, click **Close**.
 3. Click **Start** on your computer taskbar, and select **My Computer (Computer** if using Vista).
 4. Right-click the drive containing the SOS installation disc, and click **Open**.
 5. Double-click the **Tools** folder, and then double-click the **DataUtility.exe**.
 6. When you are prompted to select a database, choose **SOS Home 2009** and click **OK**.
 7. Use the dropdown menu to select the **Change Password** option and click **Execute Command**.
 8. Enter your new **Password** twice, and then click **Save**. When the window closes, notice the “Successfully Changed Password” message below the **Execute Command** button. Click **X** in the upper right corner to close the **Data Utility** window.
 9. Remove the disc from the CD-ROM or DVD drive.
-

Important Note:

Be sure to write your password down and put both the password and the SOS installation disc somewhere safe. Protect your teacher password by keeping the disc in a safe location.



2009 SOS Install and Setup Basics Guide

Resource List

SOS User Manual (Help File)

Click the **Help** button on the left side of your **Home** screen or press the **F1** key on the top row of your keyboard from anywhere in the application.

Students, click the **Help?** button, below the green **SOS logo** in the center of your **Home** screen, or press the **F1** key anywhere in the application.

SOS Tutorials:

Start > All Programs > AOP > Switched-On Schoolhouse 2008 > Tutorials, or
click the **Tutorials** icon on your desktop, or

<http://www.sostutorials.com>

SOS Overview Presentation

www.aophomeschooling.com

(See page 31 for navigation steps.)

Online Support

www.aophomeschooling.com/support/

Content Feedback (Curriculum)

www.aophomeschooling.com/errors/

SOS Application and Curriculum Updates:

<http://www.sosupdates.com>

Toll-Free Phone Assistance:

Customer Service:

1-800-622-3070

Technical Support:

1-866-444-4498